

HiveManager NG

Next Generation Network Management System

HiveManager NG is Aerohive's next generation enterprise-class cloud-enabled network management solution. It sets a new standard for simplicity and flexibility in unified networking by combining streamlined configuration workflows, real-time client and event monitoring, simplified troubleshooting, versatile RF planner tools and API integrations. HiveManager NG truly provides a platform for enabling a next-generation network focused on mobility.

HiveManager NG is housed in Aerohive's Cloud Services Platform, which is our globally-distributed, cloud based infrastructure that delivers network management and mobility applications giving customers a single, unified and contextual view of the mobile-centric network edge. The Cloud Services Platform is hosted in secure SOC Type II compliant data centers, with 24x7 monitoring, scheduled backups and disaster recovery capabilities.



HiveManager NG is a cloud-enabled enterprise-class NMS for Aerohive devices

Features & Benefits

Bringing up a network or "Hive" of Aerohive devices is as simple as plugging them in and opening a browser to the Aerohive Cloud Services Platform. Aerohive devices connect to HiveManager NG using secure protocols that traverse NAT and firewalls. With HiveManager NG, you can completely deploy and configure an entire enterprise-class network within 15 minutes. The key benefits include:

Simplified Deployment

Simplified deployment workflow and seamless transition from demo to production.

Centralized Configurations

Granular and streamlined device and network configuration.

Centralized Policy management

Context-aware user policies with granular and flexible control enable IT to deliver an optimized end-user experience.

Dashboard

Dashboard with contextual filters and time range slider enables monitoring of network from assets, health status, data usage and security standpoints.

Monitor

Real-time and historical view of devices, clients, alarms and events. Ability to take informed action on devices immediately from the monitor interface.

Troubleshooting

Help-desk optimized interface to triage client problems in real time with actionable data for resolution. Reduce escalation and provide better end-user experience.

[Contact us today](#) to learn how your organization can benefit from Aerohive networking solutions.

Aerohive Networks, Inc.

330 Gibraltar Drive
Sunnyvale, California 94089 USA
phone 408.510.6100
toll-free 866.918.9918
fax 408.510.6199

www.aerohive.com

Product Features

Simplified Deployment

- Customer self-service sign-up
- Guided workflow for network policy deployment
- Interactive on-screen step-by-step guided configuration help
- Ability to upload full device configuration
- RF planner with map import and export
- Ability to swap simulated APs with real Aerohive APs on RF planner map
- Devices automatically connect to HiveManager NG for provisioning
- Devices auto-provision with network policy and firmware updates

Centralized Configurations

- Device templates for switches and APs
- Aerohive device as RADIUS server
- Port types and detailed settings
- Ability to bulk edit device properties
- Simplified firmware upgrades with scheduling options
- Bonjour gateway support
- Command Line Interface access to Aerohive devices
- Local user management with automatic private PSK
- Captive web portal for user login
- Active directory/LDAP
- Syslog

Centralized Policy Management

- Customer application definition
- Client classification by location, OS type, MAC address
- Multiple user profiles for each SSID
- Time-based firewall and QoS policy
- Application, network, and MAC Layer firewall policy rules
- WIPS policy for rogue AP detection and mitigation

Dashboard

- KPI status cards and widgets
- Drill down for widgets
- Time range slider on dashboard for historical view
- 360 views of any Aerohive network policy, AP, client device, user and applications
- Global search function by network policy, MAC address, serial number, user or application name
- 7 days of historic monitoring and reporting data
- Savable contextual filters by location, SSID, policy, user profile, and client OS type
- Pre-defined widgets with drilldown capability
- Top application groups by usage
- Top applications by usage
- Top clients by usage
- Top access points by usage /clients
- Unique clients by OS and connection medium
- Maximum number of simultaneous clients

Monitor

- Drill down capability from client list to client 360 view
- Device list with rich utilities for advanced configuration and investigation
- Client list with SNR, RSSI, data usage and connection status
- Savable and reusable filters shared across dashboard and monitor
- Alarm and event lists with historical and real-time data
- Maps API

Troubleshooting

- Real-time troubleshooting with probe message and stage filters
- Mark issue resolved or escalate issue with email notification
- Help-desk optimized interface with a simple workflow
- Problem Summary, Evidence and Resolution report
- Ability to detect issues back in time
- Built in command line interface
- RADIUS test
- AP technical data download

Security and Privacy

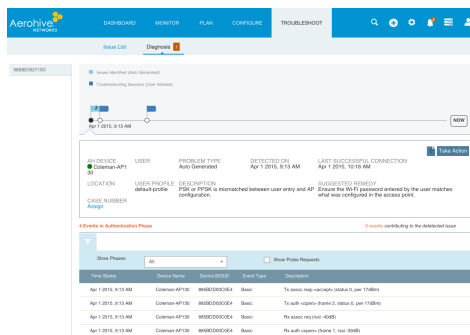
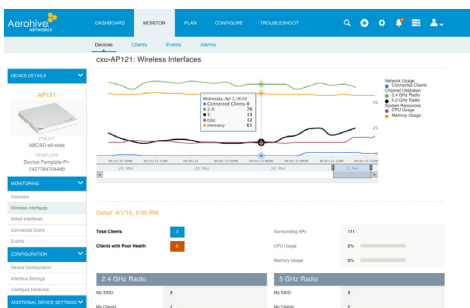
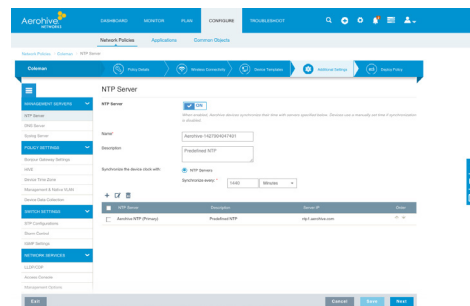
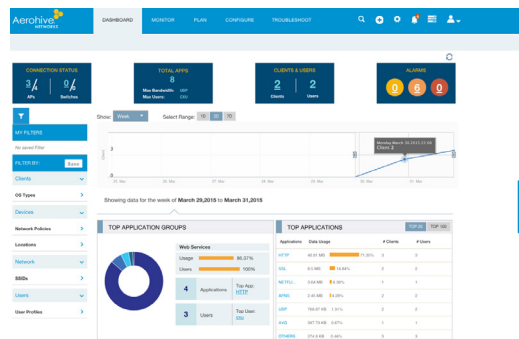
- Customer and network data is private and secure
- No customer data traverses Aerohive's network

Reliability

- Data centers with SOC Type II compliance (formerly SAS Type II)
- High availability with disaster recovery and redundancy
- Scheduled backups
- 24x7 monitoring

Supported Hardware Platform

AP: 121, 130, 141, 230, 330, 350, 1130
SR: 2024P, 2124P, 2148P



SKUs

SKU	DESCRIPTION
	HiveManager Online Service - includes software subscription and customer portal access
AH-HMOL-XXX-1YR	HiveManager NG Online Enterprise for 1 Aerohive device for 1 year
AH-HMOL-XXX-3YR	HiveManager NG Online Enterprise for 1 Aerohive device for 3 year
AH-HMOL-XXX-5YR	HiveManager NG Online Enterprise for 1 Aerohive device for 5 year

Dashboards

Powerful dashboard with contextual filters and time range slider provides current and historical view, insights into applications, trend of client count, and device data usage, and ability of drilldown to 360-views of network policy, single device, application, client or user.

Configuration

Guided workflows enable configuration of a mobility network from sign-up to deployment within 15 minutes.

Device Detail

Monitor network status and troubleshoot with per-device statistics and intuitive graphs.

Historical Troubleshooting

Help-desk optimized troubleshooting interface enables real-time troubleshooting and provides problem summary and suggested remedy.